

HHS emPOWER Map 2.0

Over 2.5 million Medicare beneficiaries rely upon electricity-dependent medical and assistive equipment, such as ventilators and wheel chairs, and cardiac devices in our communities. Severe weather and disasters that cause power outages can be life threatening for these individuals.

How can we empower community and electricity-dependent Medicare beneficiary health resilience?


Every hospital, first responder, electric company, and community member can use the map to find the monthly total of Medicare beneficiaries with electricity-dependent equipment claims at the U.S. state, territory, county, and zip code level and turn on "real-time" natural hazard and NOAA severe weather tracking services to identify areas and populations that may be impacted and are at risk for prolonged power outages.

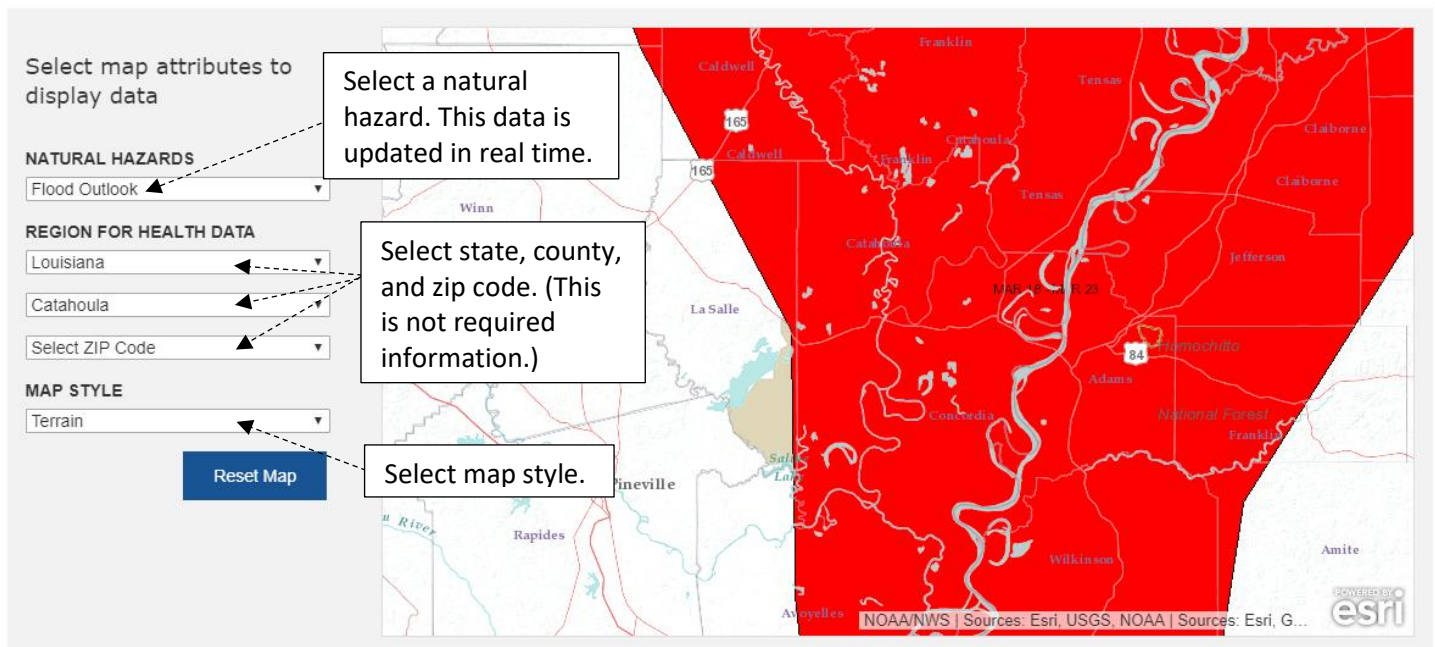
Together, we can all develop emergency plans and response activities for the whole community and assist our at-risk community members prior to, during and after an emergency.

Resource List






 [HHS emPOWER Map Factsheet](#)




State Public Health Authority

 {Coming Soon}



Medicare Data Totals	
Geographical Area:	71343
Beneficiaries:	1,631
Electricity-Dependent Beneficiaries:	111

Electricity-Dependent Scale
 0 - 0
 1 - 126
 127 - 228
 229 - 394
 395 - 1,097

Natural Hazard Legend
 Likely
 Occurring or Imminent
 Possible

Electricity-Dependant

States/Territories	Counties	ZIP Codes	
Geographic Area		Beneficiaries	Electricity-Dependent Beneficiaries
71326		305	18
71340		233	16
71343		1,631	111
71368		274	18
71401		21	11
71425		47	11

Note (1): The map only shows de-identified claims data for Medicare Fee-for-Service and Medicare Advantage (Parts A, B and C) beneficiaries that include Americans aged 65 and over and disabled Americans under age 65. This may be an under representation as some claims may not be recorded due to a submission lag or if the Medicare DME rental cap has been reached.

Note (2): The electricity-dependent number, by location, represents the total number of beneficiaries with claims in our databases from the prior month for: ventilator, BiPAP, internal feeding, IV infusion pump, suction pump, at-home dialysis, electric wheelchair, and electric bed equipment in the past 13 months; oxygen concentrator equipment in the past 36 months; and an implanted cardiac device (i.e. LVAD, RVAD, BIVAD, TAH) in the past 5 years. As privacy protection is very important, de-identification methodologies have been implemented including: removal of all personal identifiers; aggregating data totals at the geographic level; and replacing any small cell size between 1 and 10 with an 11. Some zip codes may not be represented on the map as they do not have geographical boundaries to map (e.g. post office boxes, a large building, etc.). In these instances, we add their total to the geographical zip code where the post office box or building can be found.

Note (3): The map has been provided to inform and support community partner emergency preparedness, mitigation, response, recovery, and resilience activities. Use of this tool and data signifies your agreement to: use it for the specified purposes; make no attempt to identify any individual in this data; and send an email to empower@hhs.gov if a small size between 1 and 10 is identified at any geographic level. Send any additional questions to empower@hhs.gov.

Note (4): Information regarding the Natural Hazards can be found from the different sources' webpages:

- National Oceanic and Atmospheric Administration (NOAA) National Weather Service active weather alerts can be found at: <http://www.weather.gov>.
- Hurricanes, Radar, Flood, Precipitation, and Storm Prediction: <https://idpgis.ncep.noaa.gov/arcgis/rest/services>.
- Long Duration and Short Duration Hazards: <https://new.nowcoast.noaa.gov/arcgis/rest/services>.
- Wildfire: https://geohealth.hhs.gov/arcgis/sharing/servers/404b2fe9c9ea407cae8d56d5cf62e18a/rest/services/LiveFeeds/Wildfire_Activity/MapServer.
- Seismic Activity: https://geohealth.hhs.gov/arcgis/sharing/servers/11e49b2f31b04811a339cf0865806711/rest/services/LiveFeeds/USGS_Seismic_Data/MapServer.

[HOME](#) | [PHE.GOV](#)



Office of the Assistant
Secretary for Preparedness &
Response

[Privacy, Accessibility, Disclaimer](#)

U.S. Department of Health & Human Services

200 Independence Avenue, S.W. Washington, D.C. 20201

Last updated: 30 December 2016

First published: 23 June 2015